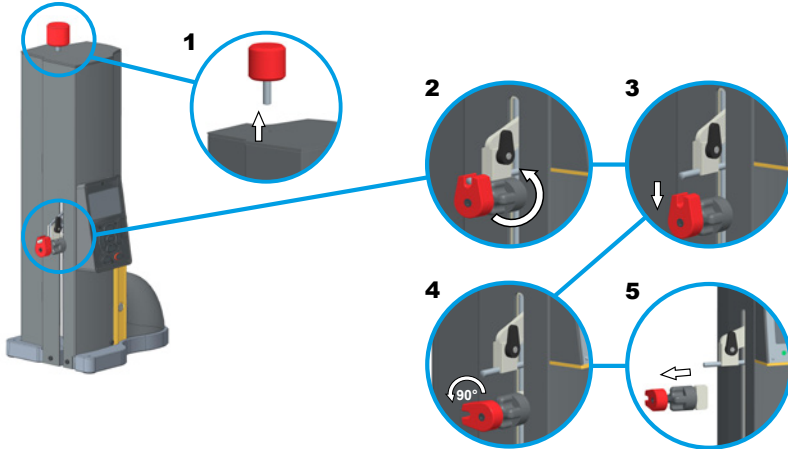




Installation

- Remove the Hi_Cal V2 and the AC adapter from the packaging and remove the transport mechanisms.
- Insert the $\varnothing 3\text{mm}$ ball probe and tighten the locking lever.
- Connect the power plug on the rear panel of the instrument.

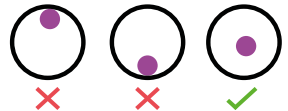


Start


- Press the button  on the front panel, let the instrument initialize (goes back and forth over the entire range).
- Once the zero has been taken on the reference surface (automatically after initialization or manually with the button ) , move the measurement probe with the paddles behind the instrument.
- A green light and an audible signal indicate that the measurement is valid.

Note : it could be needed to press more than 0.5s on the  button (after replacing the battery, restarting from a battery low auto extinction or a deep OFF extinction by pressing more than 5s on  button)

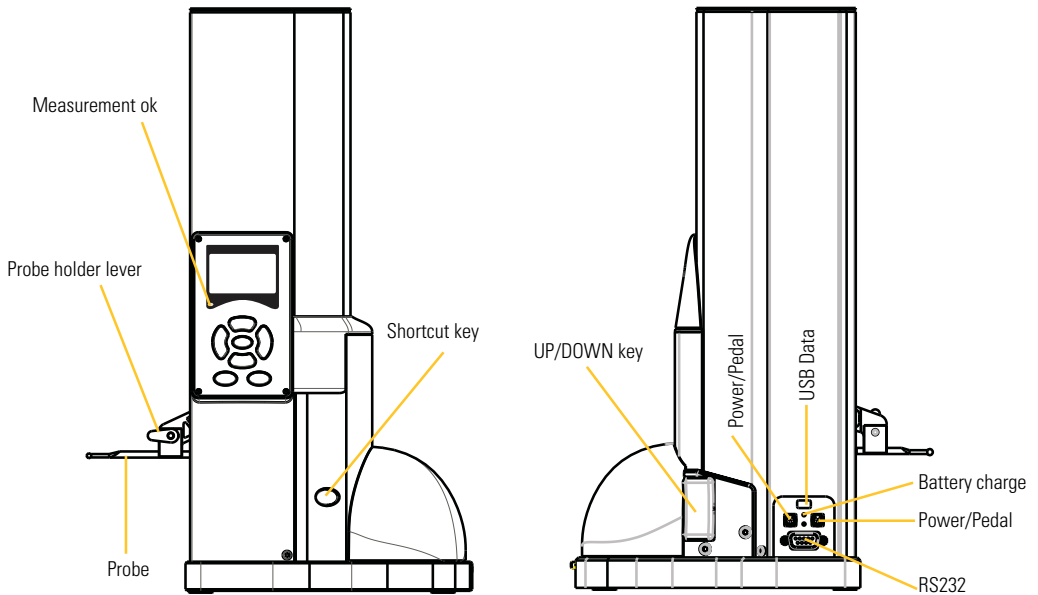
Pressing more than 5s on ON button will put the instrument in deep off. Attention must be paid to free the probe from any measurement position before the next switch ON.



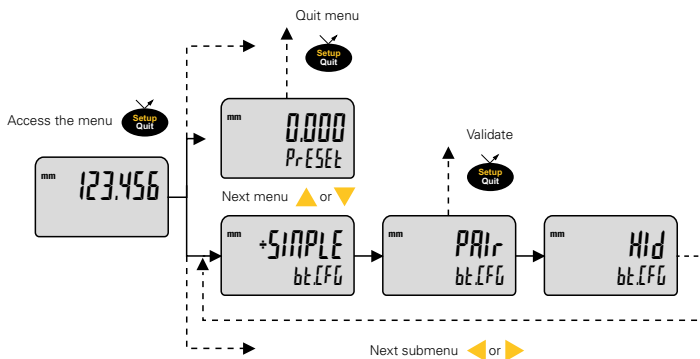
Calibration

- Press the button  and use the setting gauge provided in the package.
- Probe on one side and then on the other, the constant of the measuring key is displayed to confirm its storage.
- /!\ To be done each time you change the probe or its position

Connection / description



Access to Advanced functions



Specifications

Order number	830.0156	830.0306	830.0456	
Measuring range	[mm] 150	300	450	
Max error.	[µm]	2.0 + L [mm] / 200		
Repeatability	[µm]	1		
Resolution	[mm inch]	0.01/0.001/0.0005 0.0005/0.00005/0.00002		
Velocity	[mm/s]	100		
Measuring force	[N]	0.25-0.35		
Battery life	[h]	13/40 ¹⁾		
Weight	[kg]	4.0	4.7	6.8
Data output	USB / RS232 / Bluetooth®			
Height measurement, Ø and centerlines	Yes			

¹⁾ 8h/d active with 20% motor use, 16h/d in standby

Instruction of use :



www.sylvac.ch/HiCalV2