



Preconditions

Get dongle drivers from Sylvac downloads¹ or CD package (ref: 981.7100.10).

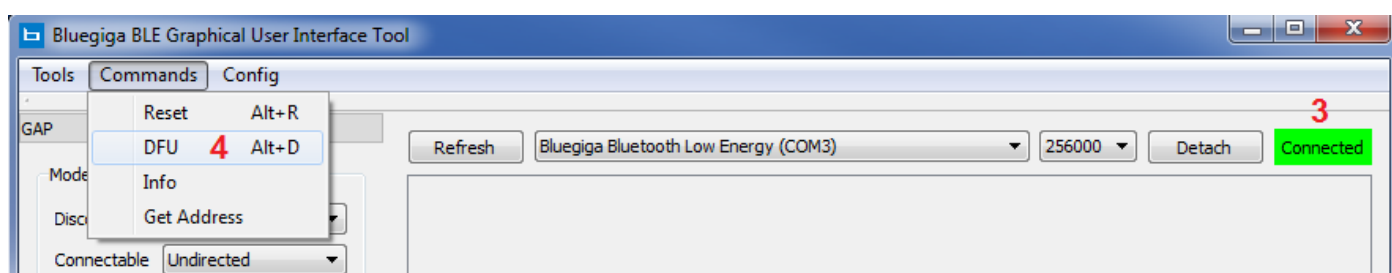
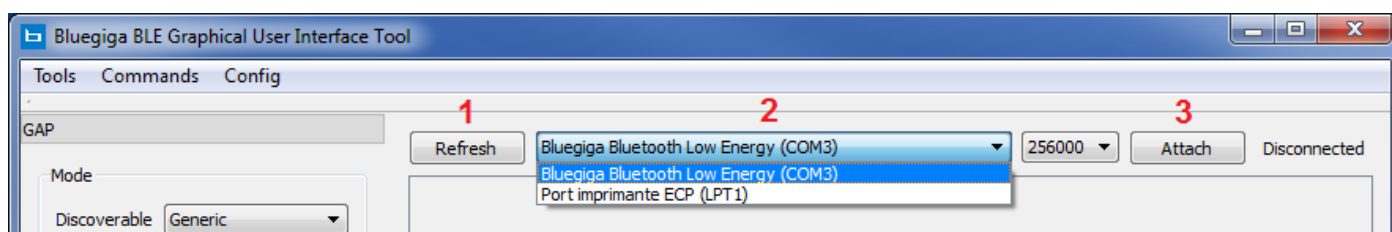
The dongle uses 2 drivers, one for normal use (default one) and another for firmware upgrade so

- Install default driver for Bluetooth dongle BLED112
- Install DFU (Device Firmware Upgrade) driver for Bluetooth dongle BLED112 (see annex 1 after step 5 below)

Close all the software which could use the Bluetooth dongle (Vmux, Sylcom, etc.).

Programing

- Plug the dongle in a USB slot
- Open « blegui2.exe »
- Step 1. Click button « Refresh »
- Step 2. Select dongle « Bluegiga Bluetooth Low Energy (COMx) »
- Step 3. Click button “Attach” and verify connection (connected green)
- Step 4. Select « DFU » in menu « Commands » (dongle disconnect itself)

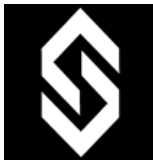


- Step 5. Click button « Boot into DFU mode »

On first use, DFU driver needs to be installed after this step, see annex 1

- Step 6. Click button « Browse », select the “.hex” file (e.g. “out8_build_130.hex”)
- Step 7. Click button « Upload »
- Step 8. Check the end of the process

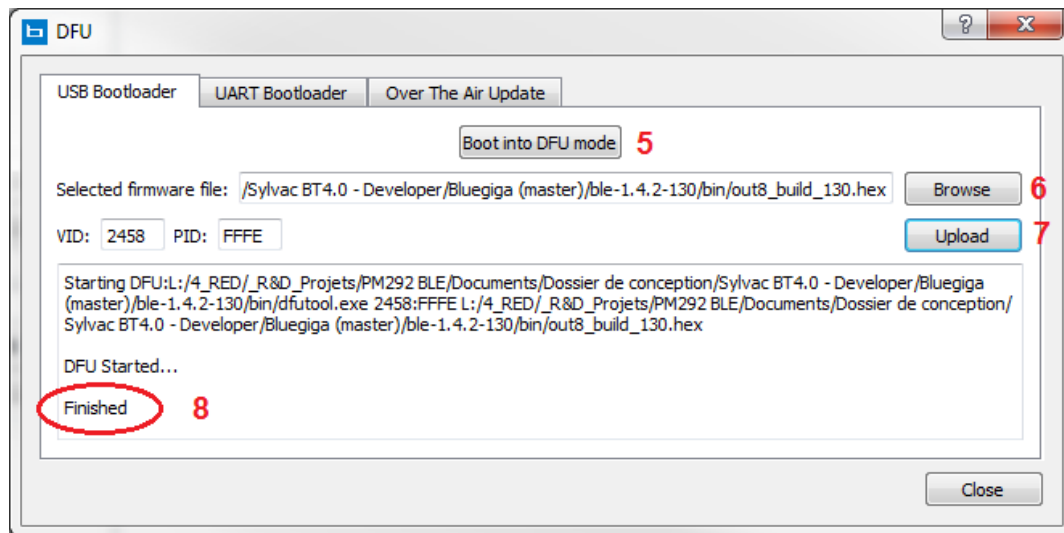
¹ <http://www.sylvac.ch/download-en/software/drivers-and-firmwares>



SYLVAC SA – INSTRUCTION

Firmware update BLED112

No. :	INS-PM 292-1340-01
Date :	04/10/2013
Par :	rop
Version :	E



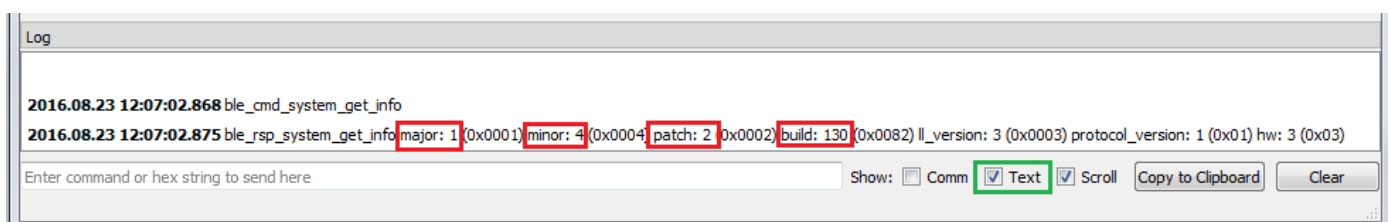
The dongle is ready. Unplug the dongle and plug the next one if necessary, see « Step 1. »


Controlling

If necessary the version can be checked as below

- Step 9. Click button « Refresh »
- Step 10. Select the dongle just programmed « Bluegiga Bluetooth Low Energy (COMx) »
- Step 11. Click button “Attach” and verify connection (“connected” in green)
- Step 12. Select « Info » in menu « Commands »

The version is readable within the log window at the bottom (if “Text” option is set).
According to the example below, the version has to be read as 1.4.2-130.



	SYLVAC SA – INSTRUCTION	No. :	INS-PM 292-1340-01
		Date :	04/10/2013
	Firmware update BLED112	Par :	rop
		Version :	E

Annex 1

The first time a dongle is set in DFU mode through the Bluegiga's utility (step 5), please install the DFU driver.

For Windows 10 users, the release needs to be at least at version 1607 to install the DFU driver without problem...

Check your Windows version (see Annex 2 – How to check Windows version).

Install DFU driver

- After step 5...
- Open the Windows Device Manager
- Find the "Low Energy" device under "other devices"
- Right click, update driver software...
- Browse the "windrv" folder within the dongle update package
- The device should now appear in the Device Manager as "Bluegiga Bluetooth Low Energy DFU"

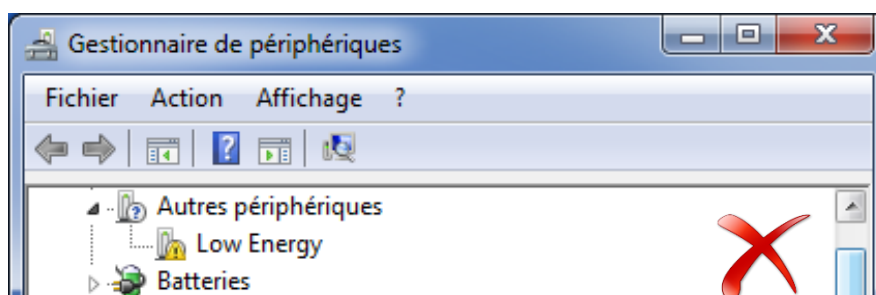


Figure 1 - DFU driver not installed yet

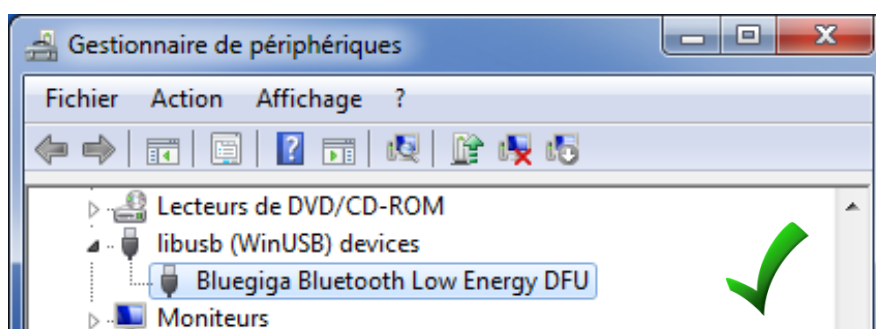


Figure 2 - DFU driver correctly installed

Annex 2

How to check Windows version

- Tap the Windows key
- Type "winver" into the Start menu
- Press Enter
- Check the version displayed

