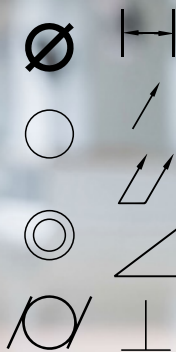




SYLVAC SCAN

**S145 & S145L**



*The measuring solution for cylindrical parts*

*Discover our brand new optical machines SCAN S145 and SCAN S145L incorporating the latest technology and our easy to use Reflex-Scan+ software, including our renowned, patented Reflex-Click technology for one click measurement of cylindrical parts without preprogramming.*

# SCAN S145



### Super fast

Precise measurement of cylindrical parts in only a few seconds.



### Easy to use

Make a complete 2D Scan in only a few seconds with just one click.



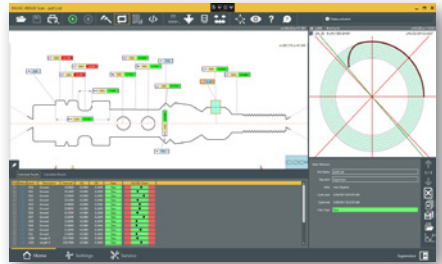
### Save time and money

Reduce inspection time, scrap, increase productivity, save money.

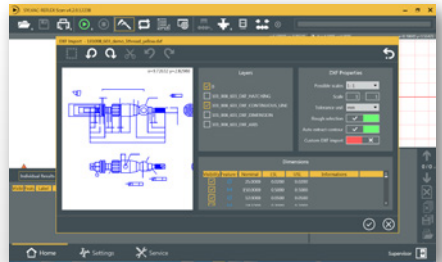
## PRODUCT SUMMARY

The Sylvac-Scan S145 optical measuring centre developed to measure mid to large sized cylindrical parts up to 145mm diameter and 1280mm in length. Our Sylvac-Scan S145 offers, fast, accurate and repeatable measurements of cylindrical parts, an ergonomic machine, equipped with quick release tooling and motorised tailstock, offering an automation ready machine. Sylvac-Scan machines are suitable shop floor use, with integrated temperature sensors and on board calibration master, ensuring optimum performance.

Easy to use Reflex-Scan+ software platform, which includes the renowned Reflex-Click technology, offering one click measurement, part recognition and auto-measure. Reflex-Scan+ software, easy to use, yet powerful, with a comprehensive suite of measurement features for complex parts, including detailed reports, statistic view, data export and SPC connectivity. Optional CAD import / export software and comparative measurements, custom features wizard and available with offline programming.



Main user interface



CAD import module

## TECHNICAL DATA

		902.4145 - SCAN S145		902.4147 - SCAN S145L	
		Diameter	Length	Diameter	Length
Measuring range	mm	145	615	145	1280
Resolution	mm	Diameter : 0.0001 / Length : 0.0001			
Accuracy	µm	Diameter : (1.5 + D/100) / Length : (4 + L/100)			
Repeatability	µm	Diameter : $2\sigma=0.5$ / Length : $2\sigma=1.0$			
Holding capacity diameter	mm	254	615	254	1280
Rotation resolution	°	0.0003			
Axial measuring speed	mm/s	80			
Axial positioning speed	mm/s	Up to 200			
Rotational meas. speed	mm/s	360			
Max. part weight	kg	60			
Machine weight	kg	530		650	