



SYLVAC SCAN

S145 & S145L



The measuring solution for cylindrical parts

Discover our brand new optical machine SCAN S145XL incorporating the latest technology and our easy to use Reflex-Scan+ software, including our renowned, patented Reflex-Click technology for one click measurement of cylindrical parts without preprogramming.

SCAN **S145XL**



Super fast

Precise measurement of cylindrical parts in only a few seconds.



Easy to use

Make a complete 2D Scan in only a few seconds with just one click.



Save time and money

Reduce inspection time, scrap, increase productivity, save money.

PRODUCT SUMMARY

Cost Savings at Every Turn: Our non-contact machine is designed for the measurement of extra large cylindrical parts. One of our machine can handle virtually all measurements (static and dynamic) on cylindrical parts up to 145mm wide and 1800mm long. With a complete 2D part scan taking a few seconds, you can reduce inspection time, minimize scrap, and increase overall productivity.

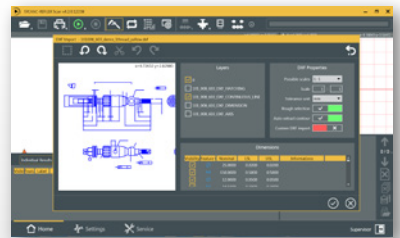
Intuitive Operation: Enjoy easy operation right at your workplace with the new touch screen control panel. The dynamic LED indicator and intuitive Reflex SCAN+ concept provide real-time feedback on the measured part's status (GO/NG) and operator messages. No prior programming is required—just a simple touch-button solution.

Precision and Efficiency: Experience exceptional precision with our no-contact machine's bi-telecentric optical system and high-resolution CMOS camera. It features a precision sliding headstock with an integrated and protected daily standard, as well as a quick and hassle-free accessory changing system. The machine also includes integrated temperature sensors and exists with or without tilt system for true comprehensive thread measurement.

Seamless Integration: Our offering includes the Reflex SCAN+ software and a PC, empowering you to effortlessly measure a wide range of elements in an intuitive manner. With its 'Automation Ready' configuration, the machine seamlessly integrates into your workflow.



Main user interface



CAD import module

TECHNICAL DATA

		902-4148 - SCAN S145XL	
		Diameter	Length
Measuring range	mm	145	1800
Resolution	mm	0.0001	
Accuracy	µm	$1.5 + (D[\text{mm}]/100) \text{ µm}^1$	$4 + (L[\text{mm}]/200) \text{ µm}^1$
Repeatability 2σ	µm	0.5	1.0
Holding capacity	mm	254	1800
Axial positioning speed	mm/s	Up to 160	
Headstock		Rotary headstock for static and dynamic measurements	
Max. part weight	kg	100	
Machine weight	kg	797	