

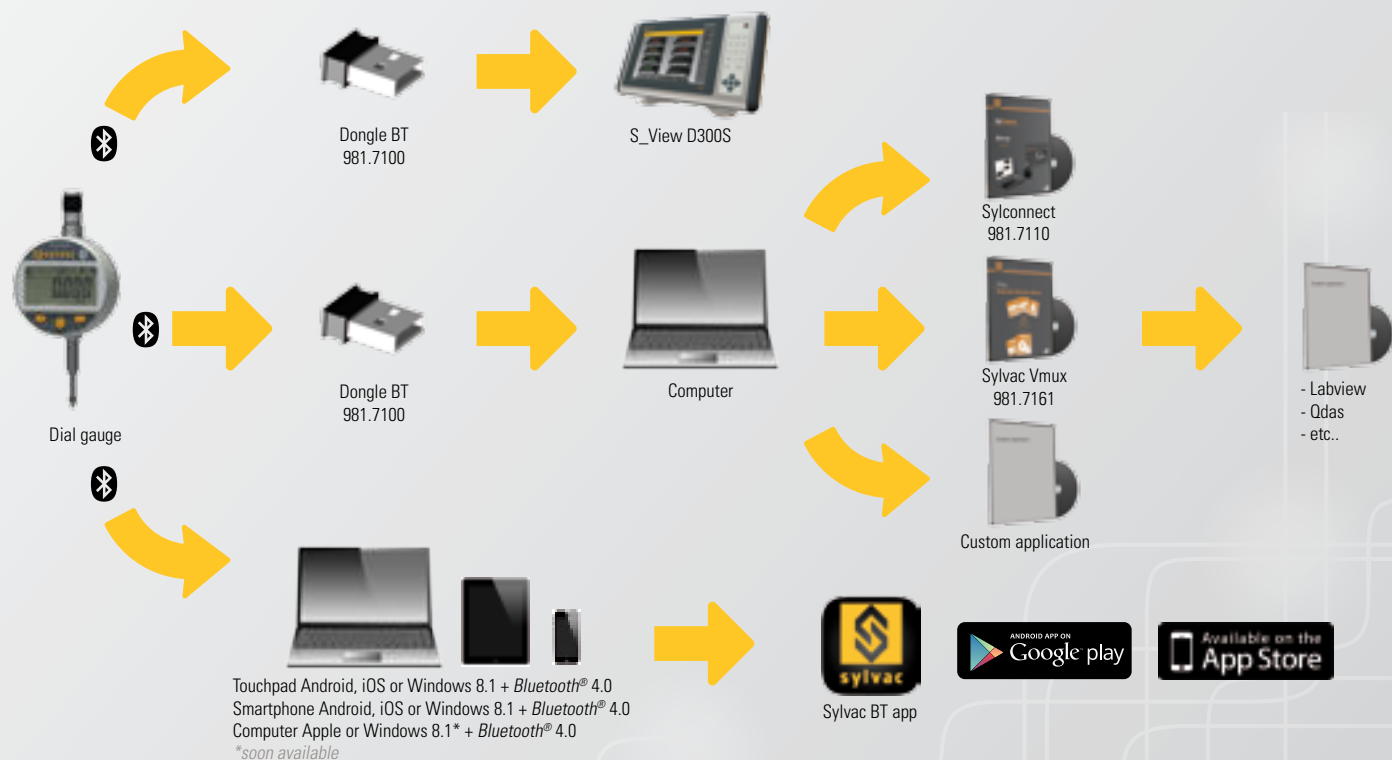


Sylvac Bluetooth Smart

How to use the *Bluetooth®* data wireless communication system

sylvac

Equipment



Configuration

Indication on the gauge

- 1° Symbol off disconnected mode
- 2° Symbol blinking advertising mode
- 3° Symbol on connected mode

New connection

- 1° Switch on *Bluetooth®* Smart compatible software and scan for new devices
- 2° Start the instrument. By default the *Bluetooth®* module is active and the instrument is available for connection during 120s (advertising mode)
- 3° As soon as the device is detected, a connection is established automatically. If no connection is established during 120s, reactivate the *Bluetooth®* module using the BT/ON menu
- 4° Instrument is ready to communicate (connected mode)

Pairing

Pairing with master is automatically done at first connection.

To connect the instrument to a new master (new pairing), it is necessary to clear all pairing information on the instrument using the BT/RESET menu.



sylvac

Swiss manufacturer of precision measuring instruments since 1969

Specifications

Radio frequency	Bluetooth 4.0 - 2.4Ghz
Robustness	FHSS
Latency (from not connected state to send data)	<6ms
Range	Open space : up to 15m Industrial environment : 1-5m
Autonomy depending on measuring mode : - Continuous : always connected with 4 values/sec - Saver : the instrument sends value only when the position has changed - Blind / Push : the value is sent from the instrument (button) or requested from the computer	Up to 2 months Up to 5 months Up to 7 months Detailed specifications on www.sylvac.ch/bluetooth

Connection types

